

doi: 10.1387/ijdb.123494ag

SUPPLEMENTARY MATERIAL

corresponding to:

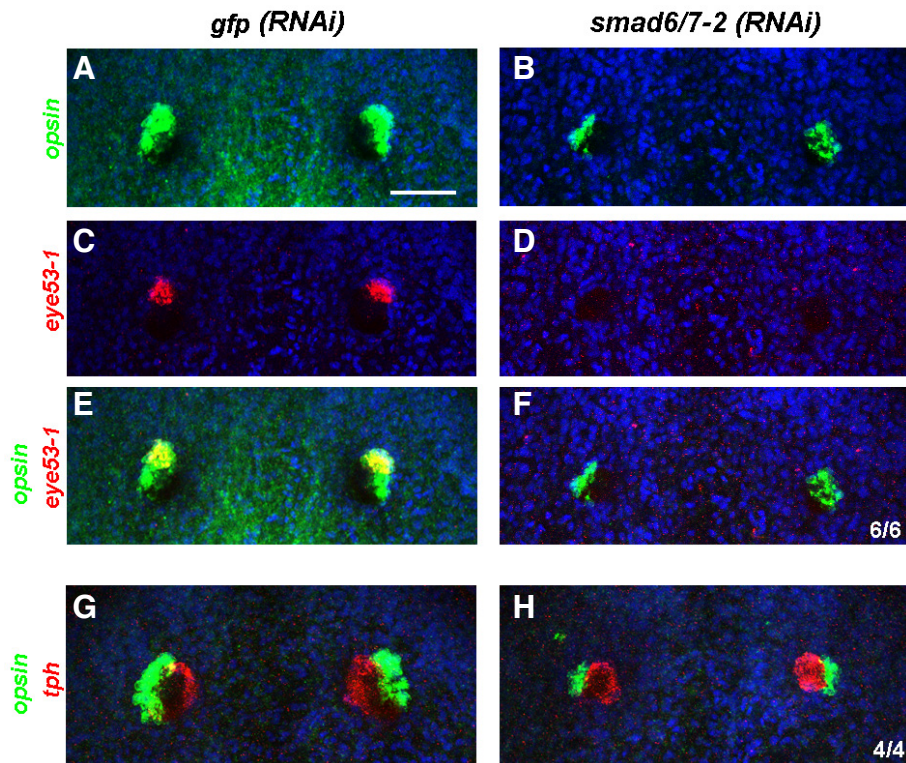
**Inhibitory Smads and bone morphogenetic rotein (BMP)
modulate anterior photoreceptor cell number
during planarian eye regeneration**

ALEJANDRO GONZÁLEZ-SASTRE, M^a DOLORES MOLINA and EMILI SALÓ

***Address correspondence to:** Emili Saló. Departament de Genètica, Facultat de Biologia, Av. Diagonal 643, edifici annex planta 1, 08028 Barcelona, Catalunya, Spain. Tel. +34-93-403-5977. Fax +34-93-403-4420. e-mail: esalo@ub.edu - web: planarian.bio.ub.es or M^a Dolores Molina. UMR 7009 CNRS, Université Pierre et Marie Curie (Paris VI), Observatoire Océanologique de Villefranche-sur-Mer, 06230 Villefranche-sur-mer, France. Tel. +33-49-376-3785. Fax +33-49-376-3792. e-mail: loli.molina.jimenez@gmail.com - ***Present address:** Université Pierre et Marie Curie (Paris VI), UMR 7009 CNRS, Observatoire Océanologique, 06230 Villefranche-sur-mer, France.

Full text for this paper is available at: <http://dx.doi.org/10.1387/ijdb.123494ag>

Final, author-corrected PDF published online: xx xxxx xxxx



Supplementary Fig. 1. *Smed-smad6/7-2* silencing in intact animals results in smaller, rounded eyes. (A-F) Double fluorescent in situ hybridization against opsin (A-B) and *eye53-1* (C-D). Note the disappearance of the domain of expression of *eye53-1* in *smad6/7-2*(RNAi) planarians. (G-H) Double fluorescent in situ hybridization against opsin and *tph*. Anterior is to the top. Scale bar, 50 μ m.