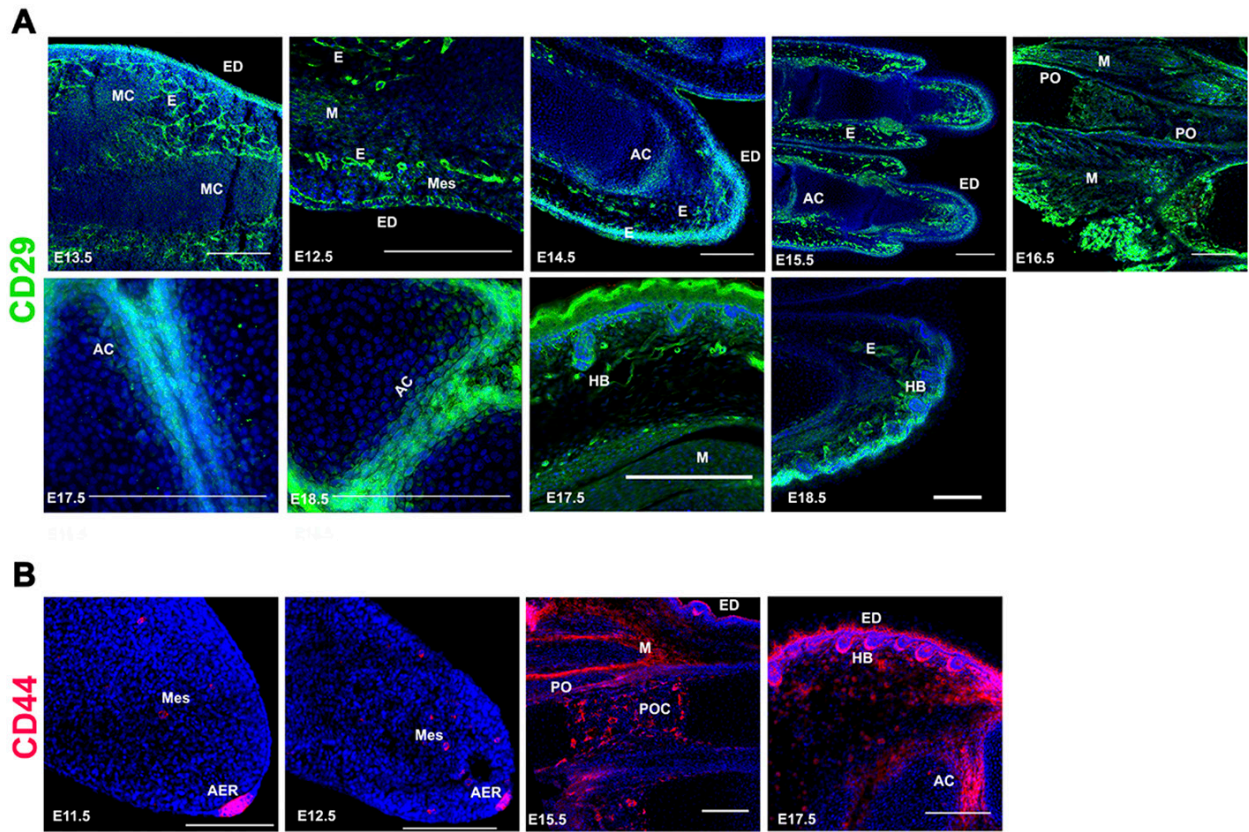


SUPPLEMENTARY MATERIAL

corresponding to:

The spatiotemporal expression patterns of MSC-associated markers contribute to the identification of progenitor subpopulations in developing limbs

ARGELIA S. GARCÍA-CERVERA, JESÚS CHIMAL-MONROY and JESSICA C. MARÍN-LLERA



Supplementary Fig. S1. Expression patterns of CD29 and CD44. (A) *CD29* or (B) *CD44* expression is shown in mouse hindlimbs at different developmental stages. Abbreviations: AC, articular cartilage; AER, apical ectodermal ridge; E, endothelium; ED, ectoderm/dermis; M, muscle; MC, mesodermal condensations; Mes, mesenchyme; PC, perichondrium; PO, periosteum; POC, primary ossification center. Nuclei are stained with DAPI (blue). The scale bar is set at 200 μm and is representative of each marker.