

doi: 10.1387/ijdb.140080nk

SUPPLEMENTARY MATERIAL

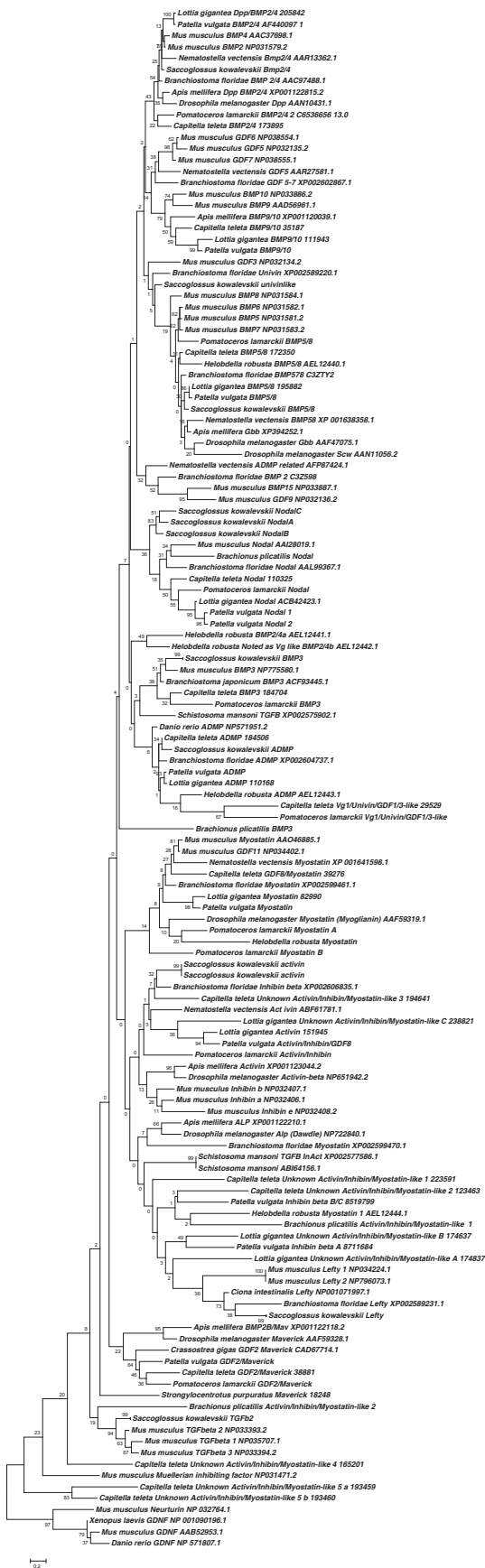
corresponding to:

**The Lophotrochozoan TGF- β signalling cassette:
diversification and conservation in a key signalling pathway**

NATHAN J. KENNY, ERICA K.O. NAMIGAI, PETER K. DEARDEN, JEROME H.L. HUI,
CRISTINA GRANDE and SEBASTIAN M. SHIMELD

***Address correspondence to:** Sebastian M Shimeld. Evolution and Development Research Group, Department of Zoology, University of Oxford, South Parks Road, OX1 3PS, UK. Tel: +44-(0)-1865-281994. E-mail: sebastian.shimeld@zoo.ox.ac.uk - web: users.ox.ac.uk/zool0615/SebShimeld.htm (non-functional, delete)

Full text corresponding to this paper is available at: <http://dx.doi.org/10.1387/ijdb.140080nk>



Supplementary Fig. S1. Example of Maximum Likelihood (Tamura et al., 2011 Whelan and Goldman (WAG) model, 1000 bootstrap replicates) phylogeny of both BMP and TGF class ligands, used for partitioning of genes into either of those two classes for further analysis. Phylogeny based on alignment generated by MAFFT (Katoh and Standley 2013) using the L-INS-i model. Sequences used in phylogenetic analysis, along with alignment, can be found in Supplementary File 1. Scale bars represent substitutions per site at given distances.