

SUPPLEMENTARY MATERIAL

corresponding to:

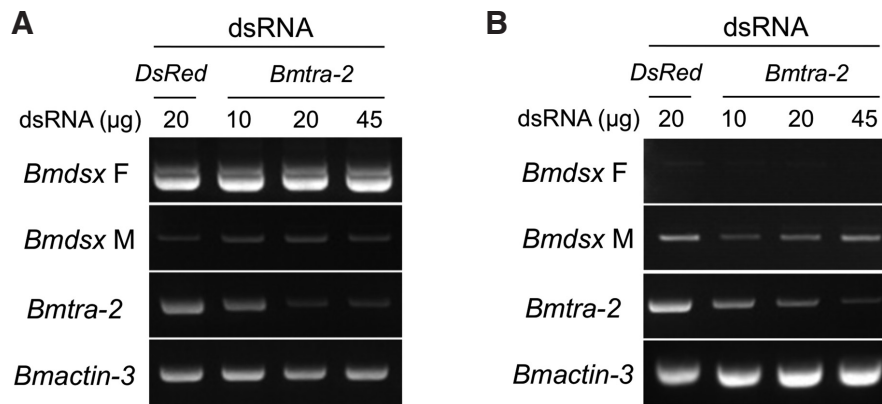
Effect of RNAi-mediated knockdown for *Bombyx mori transformer-2* gene on the sex-specific splicing of *Bmdsx* pre-mRNA

MASATAKA G. SUZUKI, KEIJI SUZUKI, FUGAKU AOKI, MASAHIRO AJIMURA

***Address correspondence to:** Masataka G. Suzuki. Department of Integrated Biosciences, Graduate School of Frontier Sciences, The University of Tokyo, 5-1-5 Kashiwanoha, Kashiwa-shi, Chiba-ken 277-8562, Japan.

Tel: +81-4-7136-3694. Fax: +81-4-7136-3698. e-mail: gakyo@k.u-tokyo.ac.jp - web: <http://park.itc.u-tokyo.ac.jp/seigyō>

The corresponding full text for this paper is available at: <http://dx.doi.org/10.1387/ijdb.120049ms>



Supplementary Fig. S1. Effect of RNAi-mediated Bmtra-2 knockdown on the sex-specific splicing of *Bmdsx* in *Bombyx* female and male cultured cells. The indicated amounts of Bmtra-2 dsRNA were transfected into BmN (female) cells (**A**) and NIAS-Bm-M1 (male) cells (**B**). Female- or male-specific splicing was detected by RT-PCR using primers indicated in Fig. 2. Labels to the left of the gel refer to female splicing (*Bmdsx* F) and male splicing (*Bmdsx* M). Lower panel shows the down-regulation of Bmtra-2 expression in the dsRNA-treated cells. Bottom panel shows the results of RT-PCR amplification of the actin3 transcript, which served as a positive control for the RT-PCR reaction. These results demonstrated that down regulation of Bmtra-2 did not affect the sex-specific splicing of *Bmdsx*.