

doi: 10.1387/ijdb.113416bu

SUPPLEMENTARY MATERIAL

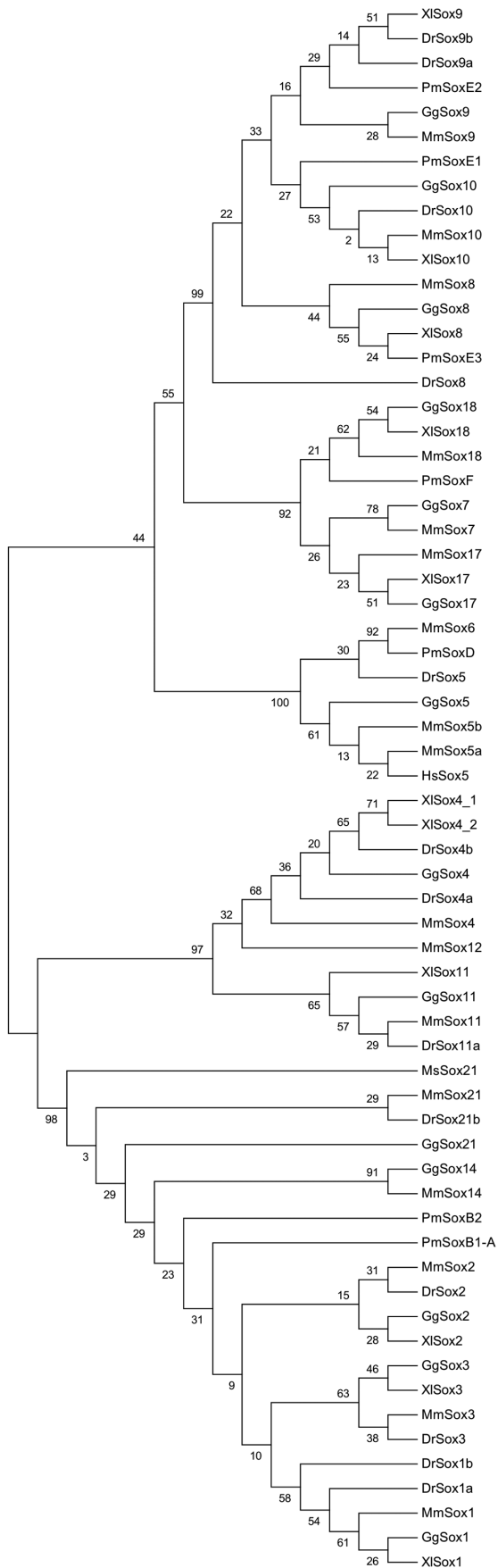
corresponding to:

**Expression of *Sox* family genes
in early lamprey development**

BENJAMIN R. UY, MARCOS SIMOES-COSTA, TATJANA SAUKA-SPENGLER and MARIANNE E. BRONNER

***Address correspondence to:** Marianne E. Bronner. Division of Biology 139-74, California Institute of Technology, Pasadena, CA 91125 USA.
Tel: +1-626-395-3355. e-mail: mbronner@caltech.edu

Full text corresponding to this supplementary material is available at: <http://dx.doi.org/10.1387/ijdb.113416bu>



Supplementary Fig. S1. Maximum Likelihood phylogenetic tree of lamprey Sox genes. Unrooted phylogenetic tree of Sox genes obtained from analysis performed on MEGA 5.05. The HMG box protein sequences were used in the construction of the tree. Boxes highlight the families of Sox genes. Abbreviations are Dr, Danio rerio; Gg, Gallus gallus; Mm, Mus musculus; Pm, Petromyzon marinus; XI, Xenopus laevis.