

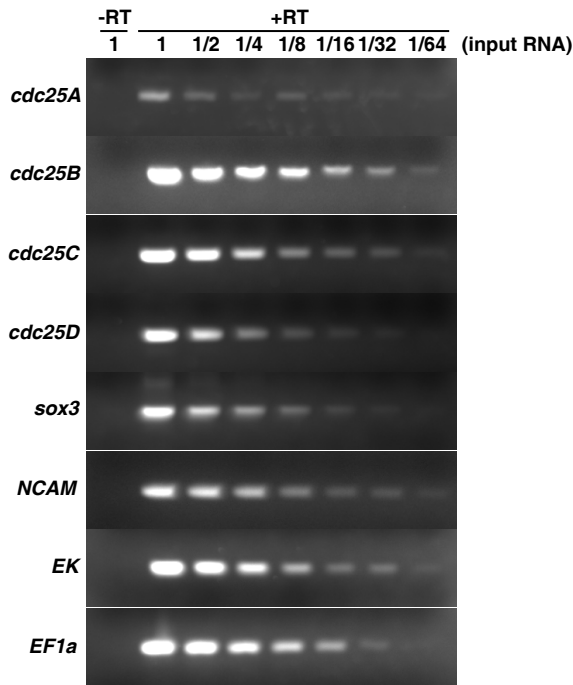
doi: 10.1387/ijdb.113287nn

SUPPLEMENTARY MATERIAL

corresponding to:

**Temporal and spatial expression patterns of Cdc25
phosphatase isoforms during early *Xenopus* development**

NOBUSHIGE NAKAJO*, YU-KI DENO, HIROYUKI UENO, CHIHIRO KENMOCHI,
KEN SHIMUTA and NORIYUKI SAGATA



Supplementary Fig. S1 (left). The total RNA extracted from one stage 20 embryo was serially diluted and subjected to RT-PCR for the indicated transcripts.

Supplementary Fig. S2 (bottom). The cDNAs described in Fig. 5 were subjected to PCR with different cycles for the indicated transcripts. *cdc25A* (Low cycle: 24 cycles, Middle cycle: 27 cycles, High cycle: 30 cycles), *cdc25B* (Low cycle: 27 cycles, Middle cycle: 30 cycles, High cycle: 33 cycles), *cdc25C* (Low cycle: 24 cycles, Middle cycle: 27 cycles, High cycle: 30 cycles), *cdc25D* (Low cycle: 24 cycles, Middle cycle: 27 cycles, High cycle: 30 cycles), *sox3* (Low cycle: 24 cycles, Middle cycle: 27 cycles, High cycle: 30 cycles), *NCAM* (Low cycle: 27 cycles, Middle cycle: 30 cycles, High cycle: 33 cycles), *EK*: epidermal keratin (Low cycle: 17 cycles, Middle cycle: 20 cycles, High cycle: 23 cycles) and *EF1- α* (Low cycle: 17 cycles, Middle cycle: 20 cycles, High cycle: 23 cycles).

