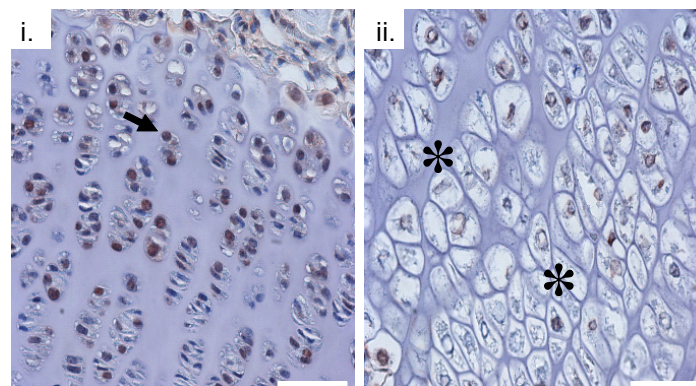


SUPPLEMENTARY MATERIAL

corresponding to:

Persistent expression of *Twist1* in chondrocytes causes growth plate abnormalities and dwarfism in mice

ROSA M. GUZZO, VIKTORIA ANDREEVA, DOUGLAS B. SPICER and M. HICHAM DRISSI



Supplemental Fig. 1. *Twist1* expression in growth plate chondrocytes. *Twist1* immunolocalization was detected in proliferating zone growth plate chondrocytes (arrow) within the long bones of two week postnatal mice (i). In contrast, hypertrophic chondrocytes (asterisk, *) do not express significant levels of *Twist1* (ii). Scale bar, 50 μ m.