

doi: 10.1387/ijdb.103252sg

THE INTERNATIONAL JOURNAL OF
DEVELOPMENTAL
BIOLOGY
www.intjdevbiol.com

SUPPLEMENTARY MATERIAL

corresponding to:

**Origins of *Cdx1* regulatory elements
suggest roles in vertebrate evolution**

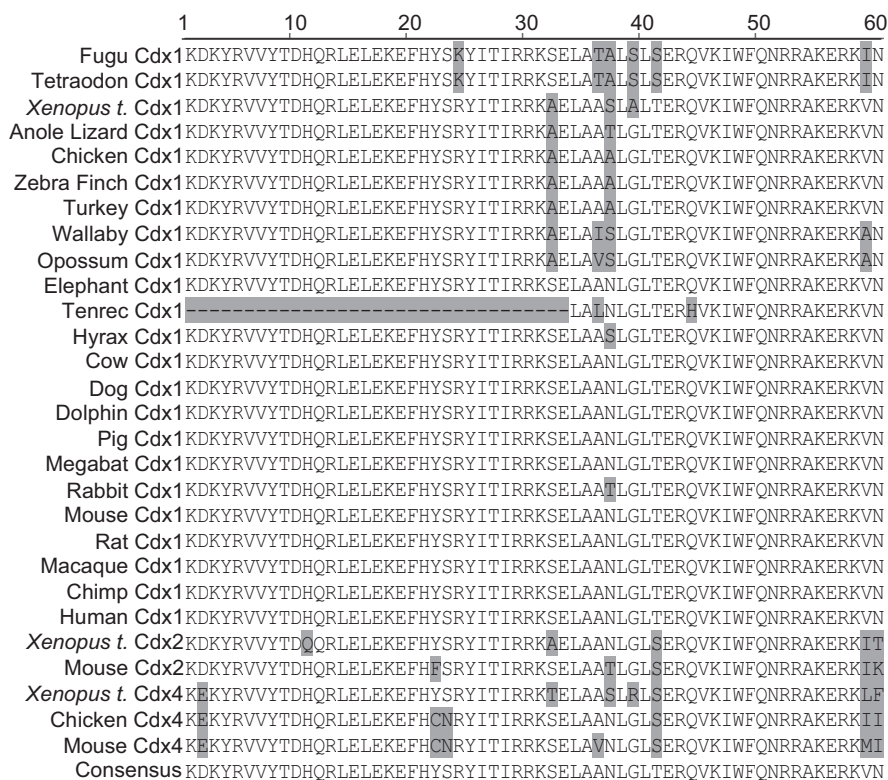
STEPHEN J. GAUNT and YU-LEE PAUL

SUPPLEMENTARY TABLE 1

ACCESSION NUMBERS OF NUCLEOTIDE SEQUENCES EXAMINED

Gene	Ensembl Accession No.	Gene	NCBI Accession No.
Fugu <i>Cdx1</i>	ENSTRUG00000000997	Chicken <i>Cdx1</i>	NC_006100.2
Tetraodon <i>Cdx1</i>	ENSTNIG00000000119	Zebra Finch <i>Cdx1</i>	NW_002197294.1
<i>Xenopus tropicalis Cdx1</i>	ENSXETG00000010282	Cow <i>Cdx1</i>	NC_007305.3
Anole Lizard <i>Cdx1</i>	ENSACAG00000015334	Dog <i>Cdx1</i>	NC_006586.2
Turkey <i>Cdx1</i>	ENSMGAG00000006839	Mouse <i>Cdx1</i>	NC_000084.5
Wallaby <i>Cdx1</i>	ENSMEUG00000007938	Rat <i>Cdx1</i>	NW_047514.2
Opossum <i>Cdx1</i>	ENSMODG00000009708	Chimp <i>Cdx1</i>	NW_001235420.1
Elephant <i>Cdx1</i>	ENSLAFG00000025906	Human <i>Cdx1</i>	AC_000048.1
Lesser Hedgehog Tenrec <i>Cdx1</i>	ENSETEG00000008022	<i>Xenopus tropicalis Cdx2</i>	NP_989209.1
Hyrax <i>Cdx1</i>	ENSPCAG00000008426	Mouse <i>Cdx2</i>	NP_031699.2
Dolphin <i>Cdx1</i>	ENSTTRG00000014646	<i>Xenopus tropicalis Cdx4</i>	NP_989417.1
Pig <i>Cdx1</i>	ENSSSCG00000014445	Chicken <i>Cdx4</i>	NP_989945.1
Megabat <i>Cdx1</i>	ENSPVAG00000001315	Mouse <i>Cdx4</i>	NP_031700.1
Rabbit <i>Cdx1</i>	ENSOCUG00000012479		
Macaque <i>Cdx1</i>	ENSMMUG00000011558		

The turkey sequence is from Pre-Ensembl.



Supplementary Fig. 1. Alignment of homeodomain amino acid sequences to facilitate positive identification of *Cdx1*. Amino acids seen to be consistently conserved in *Cdx1* are Asp at position 2, Tyr at 22, Ser at 23, and Asn at 60. Grey highlight, amino acids which differ from the *Cdx1* consensus. The first part of the homeodomain is not yet sequenced in Tenrec.